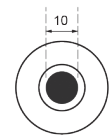




CASTORS & WHEELS



TeamStar Castors	38-42
Wicke Castors	43
Pneumatic Wheels.....	44-45
Castor Accessories.....	46



Bolt Hole Type

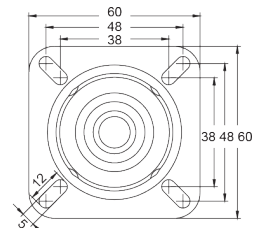


Plate Type

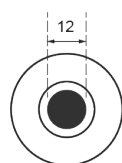
General Duty/Light Grey Rubber

50kg - 75kg Capacity

- Double Ball Race Head Set.
- Pressed Metal Frame.
- Zinc Plated Corrosion Resistant Frame.
- Axle Sleeve through Wheel.
- TPP Rubber. Suitable for most surfaces.



50kg - 75kg CAPACITY		BOLT HOLE - 10mm			MOUNTING PLATE	
Wheel Diameter	Overall Height	Model	Model	Model	Model	Model
50mm (50kg)	69mm	TE11TPP050H	TE11TPP050HB	TE11TPP050S	TE11TPP050SB	TE11TPP050R
75mm (70kg)	100mm	TE11TPP075H	TE11TPP075HB	TE11TPP075S	TE11TPP075SB	TE11TPP075R
100mm (75kg)	125mm	TE11TPP100H	TE11TPP100HB	TE11TPP100S	TE11TPP100SB	TE11TPP100R



Bolt Hole Type

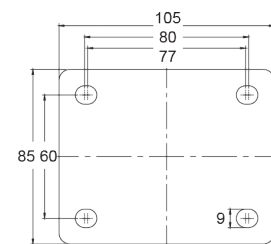


Plate Type

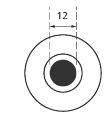
Industrial Grey Rubber

150kg - 190kg Capacity

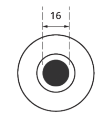
- Double Ball Race Head Set.
- Pressed Metal Frame.
- Zinc Plated Corrosion Resistant Frame.
- Precision Ball Bearing.
- TPP Rubber. Suitable for most surfaces.



150kg - 190kg CAPACITY		BOLT HOLE - 12mm			MOUNTING PLATE	
Wheel Diameter	Overall Height	Model	Model	Model	Model	Model
80mm (140kg)	108mm	TE21TPB080H	TE21TPB080HB	TE21TPB080S	TE21TPB080SB	TE21TPB080R
100mm (150kg)	128mm	TE21TPB100H	TE21TPB100HB	TE21TPB100S	TE21TPB100SB	TE21TPB100R
125mm (190kg)	155mm	TE21TPB125H	TE21TPB125HB	TE21TPB125S	TE21TPB125SB	TE21TPB125R



Hole Type A



Hole Type B

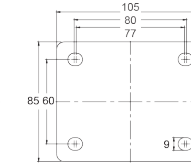


Plate Type A

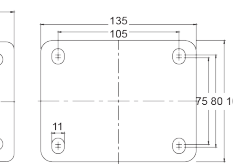


Plate Type B

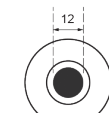
Industrial Blue Rubber

130kg - 300kg Capacity

- Double Ball Race Head Set.
- Pressed Metal Frame.
- Zinc Plated Corrosion Resistant Frame.
- Roller Bearing.
- Blue Elastic Rubber.



130kg - 300kg CAPACITY		BOLT HOLE			MOUNTING PLATE			
Wheel Diameter	Overall Height	Model	Model	Hole Type	Model	Model	Model	Plate Type
80mm (130kg)	108mm	TE21ENR080H	TE21ENR080HB	A	TE21ENR080S	TE21ENR080SB	TE21ENR080R	A
100mm (140kg)	128mm	TE21ENR100H	TE21ENR100HB	A	TE21ENR100S	TE21ENR100SB	TE21ENR100R	A
125mm (180kg)	155mm	TE21ENR125H	TE21ENR125HB	A	TE21ENR125S	TE21ENR125SB	TE21ENR125R	A
160mm (300kg)	200mm	TE21ENR160H	TE21ENR160HB	A/B	TE21ENR160S	TE21ENR160SB	TE21ENR160R	B



Bolt Hole Type

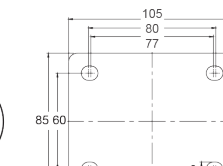


Plate Type A

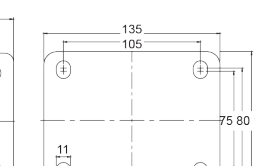


Plate Type B

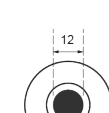
Industrial Urethane

140kg - 300kg Capacity

- Double Ball Race Head Set.
- Pressed Metal Frame.
- Zinc Plated Corrosion Resistant Frame.
- Roller Bearing.
- Urethane on Nylon.



140kg - 300kg CAPACITY		BOLT HOLE - 12mm			MOUNTING PLATE			
Wheel Diameter	Overall Height	Model	Model	Model	Model	Model	Model	Plate Type
80mm (140kg)	108mm	TE21UNR080H	TE21UNR080HB	TE21UNR080S	TE21UNR080SB	TE21UNR080R	TE21UNR080R	A
100mm (150kg)	128mm	TE21UNR100H	TE21UNR100HB	TE21UNR100S	TE21UNR100SB	TE21UNR100R	TE21UNR100R	A
125mm (190kg)	155mm	TE21UNR125H	TE21UNR125HB	TE21UNR125S	TE21UNR125SB	TE21UNR125R	TE21UNR125R	A
160mm (300kg)	200mm	TE21UNR160H	TE21UNR160HB	TE21UNR160S	TE21UNR160SB	TE21UNR160R	TE21UNR160R	B



Bolt Hole Type

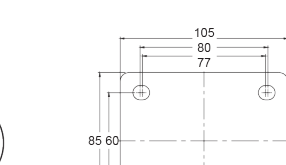


Plate Type

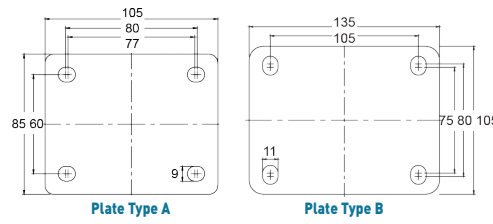
Industrial White Nylon

180kg - 270kg Capacity

- Double Ball Race Head Set.
- Pressed Metal Frame.
- Zinc Plated Corrosion Resistant Frame.
- Roller Bearing.
- White Nylon.



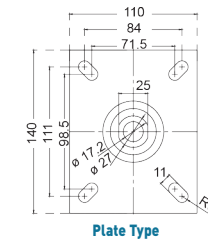
180kg - 270kg CAPACITY		BOLT HOLE - 12mm			MOUNTING PLATE			
Wheel Diameter	Overall Height	Model	Model	Model	Model	Model	Model	Model
80mm (180kg)	108mm	TE21NNR080H	TE21NNR080HB	TE21NNR080S	TE21NNR080SB	TE21NNR080R	TE21NNR080R	TE21NNR080R
100mm (190kg)	128mm	TE21NNR100H	TE21NNR100HB	TE21NNR100S	TE21NNR100SB	TE21NNR100R	TE21NNR100R	TE21NNR100R
125mm (270kg)	155mm	TE21NNR125H	TE21NNR125HB	TE21NNR125S	TE21NNR125SB	TE21NNR125R	TE21NNR125R	TE21NNR125R



- Medium Heavy Duty Rubber**
200kg - 400kg Capacity
- Double Ball Race Head Set.
 - Pressed Metal Frame - Heavy Duty.
 - Zinc Plated Corrosion Resistant Frame.
 - Blue Elastic Rubber.
 - Precision Bearing.



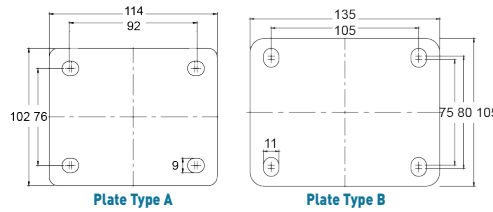
200kg - 400kg CAPACITY		MOUNTING PLATE			
Wheel Diameter	Overall Height	Model	Model	Model	Plate Type
100mm (200kg)	128mm	TE31EZB100S	TE31EZB100SB	TE31EZB100R	A
125mm (250kg)	155mm	TE31EZB125S	TE31EZB125SB	TE31EZB125R	A
160mm (300kg)	200mm	TE31EZB160S	TE31EZB160SB	TE31EZB160R	B
200mm (400kg)	240mm	TE31EZB200S	TE31EZB200SB	TE31EZB200R	B



- Super Heavy Duty Urethane**
550kg - 800kg Capacity
- Precision Bearing Headset.
 - Super Heavy Duty.
 - Fully Welded Metal Frame.
 - Zinc Plated Corrosion Resistant Frame.
 - Precision Bearing Wheel.
 - Urethane on Cast Iron.



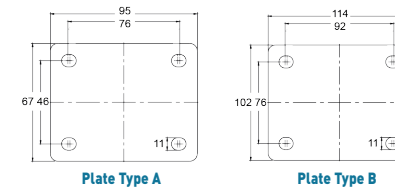
550kg - 800kg CAPACITY		MOUNTING PLATE		
Wheel Diameter	Overall Height	Model	Model	Model
125mm (550kg)	180mm	TE51UIB125S	TE51UIB125SB	TE51UIB125R
160mm (600kg)	210mm	TE51UIB160S	TE51UIB160SB	TE51UIB160R



- Heavy Duty Urethane**
250kg - 400kg Capacity
- Double Ball Race Head Set.
 - Heavy Duty.
 - Welded Metal Frame.
 - Urethane on Nylon.
 - Precision Bearing.



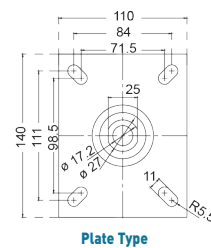
250kg - 400kg CAPACITY		MOUNTING PLATE			
Wheel Diameter	Overall Height	Model	Model	Model	Plate Type
100mm (200kg)	130mm	TE41UPB100S	TE41UPB100SB	TE41UPB100R	A/B
125mm (250kg)	165mm	TE41UPB125S	TE41UPB125SB	TE41UPB125R	A/B
150mm (300kg)	195mm	TE41UPB150S	TE41UPB150SB	TE41UPB150R	A/B



- Heavy Duty Urethane**
110kg - 400kg Capacity
- Urethane on Cast Iron Wheel.
 - Fully Welded Metal Frame.
 - Zinc Plated Corrosion Resistant Frame.
 - Precision Bearing Wheel.



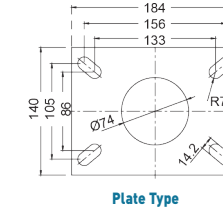
110kg - 400kg CAPACITY		MOUNTING PLATE			
Wheel Diameter	Overall Height	Model	Model	Model	Plate Type
75mm (110kg)	106mm	TE60UOC075S	TE60UOC075SB	TE60UOC075R	A
100mm (250kg)	143mm	TE71UOC100S	TE71UOC100SB	TE71UOC100R	B
125mm (300kg)	165mm	TE71UOC125S	TE71UOC125SB	TE71UOC125R	B
150mm (350kg)	191mm	TE71UOC150S	TE71UOC150SB	TE71UOC150R	B
200mm (400kg)	241mm	TE71UOC200S	TE71UOC200SB	TE71UOC200R	B



- Super Heavy Duty Urethane**
300kg - 500kg Capacity
- Double Ball Race Head Set.
 - Heavy Duty.
 - Welded Metal Frame.
 - Urethane on Nylon.
 - Precision Bearing.



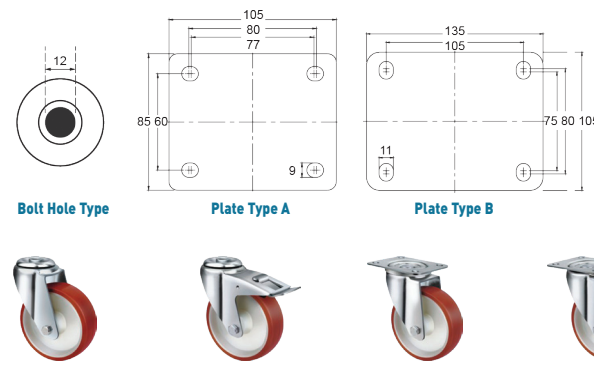
300kg - 500kg CAPACITY		MOUNTING PLATE		
Wheel Diameter	Overall Height	Model	Model	Model
125mm (300kg)	175mm	TE51UNB125S	TE51UNB125SB	TE51UNB125R
160mm (400kg)	205mm	TE51UNB160S	TE51UNB160SB	TE51UNB160R
200mm (500kg)	250mm	TE51UNB200S	TE51UNB200SB	TE51UNB200R



- Kingpinless Extra Heavy Duty**
1000kg - 1500kg Capacity
- Kingpinless Head Race.
 - Fully Welded Metal Frame.
 - Zinc Plated Corrosion Resistant Frame.
 - Precision Bearing.
 - Urethane on Cast Iron Wheel.



1000kg - 1500kg CAPACITY		MOUNTING PLATE	
Wheel Diameter	Overall Height	Model	Model
200mm (1000kg)	237mm	TE71UXB200S	TE71UXB200R
250mm (1300kg)	292mm	TE71UXB250S	TE71UXB250R
300mm (1500kg)	343mm	TE71UXB300S	TE71UXB300R

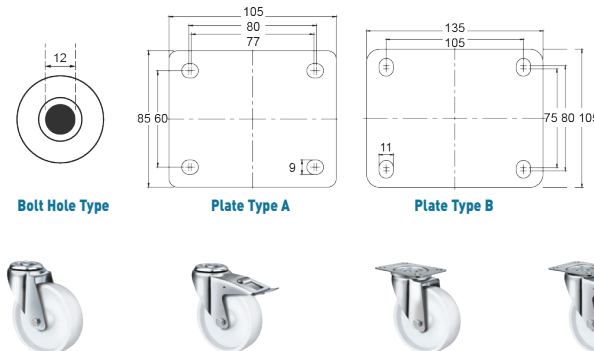


Stainless Steel Urethane
 180kg - 290kg Capacity

- Double Ball Race Head Set.
- Pressed Stainless Steel Metal Frame.
- Stainless Steel Axle Sleeve.
- Nylon Wheel.



180kg - 290kg CAPACITY		BOLT HOLE - 12mm		MOUNTING PLATE			
Wheel Diameter	Overall Height	Model	Model	Model	Model	Model	Plate Type
80mm (180kg)	108mm	TE22UNI080H	TE22UNI080HB	TE22UNI080S	TE22UNI080SB	TE22UNI080R	A
100mm (190kg)	128mm	TE22UNI100H	TE22UNI100HB	TE22UNI100S	TE22UNI100SB	TE22UNI100R	A
125mm (270kg)	155mm	TE22UNI125H	TE22UNI125HB	TE22UNI125S	TE22UNI125SB	TE22UNI125R	A

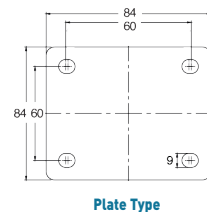


Stainless Steel
 180kg - 290kg Capacity

- Double Ball Race Head Set.
- Pressed Stainless Steel Metal Frame.
- Stainless Steel Axle Sleeve.
- Nylon Wheel.



180kg - 290kg CAPACITY		BOLT HOLE - 12mm		MOUNTING PLATE			
Wheel Diameter	Overall Height	Model	Model	Model	Model	Model	Plate Type
80mm (180kg)	108mm	TE22NNP080H	TE22NNP080HB	TE22NNP080S	TE22NNP080SB	TE22NNP080R	A
100mm (190kg)	128mm	TE22NNP100H	TE22NNP100HB	TE22NNP100S	TE22NNP100SB	TE22NNP100R	A
125mm (270kg)	155mm	TE22NNP125H	TE22NNP125HB	TE22NNP125S	TE22NNP125SB	TE22NNP125R	A

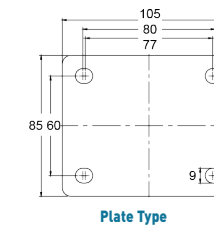


Heavy Duty Low Profile
 300kg - 400kg Capacity

- Double Ball Race Head Set.
- Fully Welded Frame.
- Precision Bearing.
- Nylon Wheel.



300 - 400kg CAPACITY		MOUNTING PLATE			
Wheel Diameter	Overall Height	Model	Model	Model	Plate Type
50mm (300kg)	79mm	TE38NZB050S	TE38NZB050SB	TE38NZB050R	A
75mm (400kg)	105mm	TE37NZB075S	TE37NZB075SB	TE37NZB075R	A

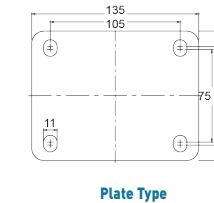
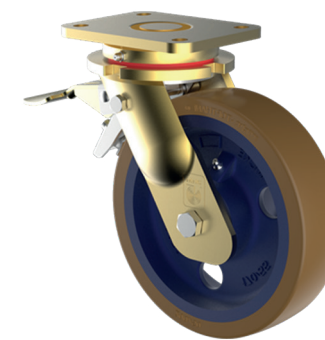


Heavy Duty Low Profile
 300kg Capacity

- Heavy Duty Low Profile.
- Fully Welded Metal Frame.
- Zinc Plated Corrosion Resistant Frame.
- Precision Bearing Wheel.

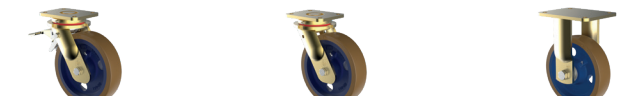


300kg CAPACITY		MOUNTING PLATE	
Wheel Diameter	Overall Height	Model	Model
50mm (300kg)	87mm	TWNZ50S	TWNZ50R



Heavy Duty Urethane
 1000kg Capacity

- Urethane on Cast Iron Wheel.
- Fully Welded Metal Frame.
- Zinc Plated Corrosion Resistant Frame.
- Precision Bearing Wheel.



1000kg CAPACITY		MOUNTING PLATE		
Wheel Diameter	Overall Height	Model	Model	Model
200mm (1000kg)	245mm	TWUC200SB	TWUC200S	TWUC200SR



Grey Rubber Wheel
 100kg Capacity

- Grey Non-marking Rubber.
- Needle Bearings.



100kg CAPACITY		MOUNTING PLATE
Wheel Diameter	Overall Height	Model
200mm (100kg)	200mm	TWGR200W



Black Rubber Utility Wheel

150kg Capacity

- Puncture Free for Wheelbarrows & Utility Equipment.
- Available with either Double Sealed Precision Ball Bearings for easiest rolling (max speed 10km/hr) or Plain Inserted Bushes for use where wet conditions may be encountered.



150kg CAPACITY		WHEEL TYPE	
Wheel Diameter	Overall Height	Model - 3/4" Axle	Model - 20mm Axle
250mm (150kg)	129mm	R25050C-PRYQ34	R25050C-PRYQ20



Pneumatic - Steel Wheel

120kg - 230kg Capacity

- Traditional Steel Centre with Inner Tube.
- Welded One Piece Wobble-free Wheels.
- Centres up to and including the 500x6 are manufactured from 1.8mm Steel, and the 650x8 is 2mm Thick Steel.



120kg - 230kg CAPACITY		CAPACITY AT SPEEDS		WHEEL TYPE				
Wheel Diameter	Wheel Width	8km/hr	15km/hr	Model	Model	Model	Model	Model
220mm (120kg)	50mm	120kg	100kg	250X4LUG				
250mm (140kg)	70mm	140kg	110kg		300X4DMD			
320mm (200kg)	80mm	200kg	180kg			350X6KNO		
400mm (220kg)	100mm	220kg	200kg				400X8KNO	
420mm (230kg)	160mm	230kg	200kg					650X8GRA

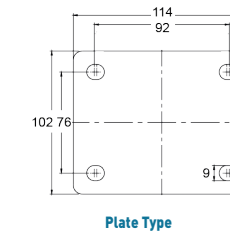


Semi Pneumatic - Puncture Proof Wheel

125kg - 135kg Capacity

- Made in Taiwan.
- Puncture Proof Foam Filled Tyres.
- 3/4" Ball bearing Size available.

100kg CAPACITY				MOUNTING PLATE
Wheel Diameter	Overall Height	Tyre Colour	Ball Bearing Size	Model
265mm (100kg)	265mm	Black	3/4 Inch	PP350 X 4SB34



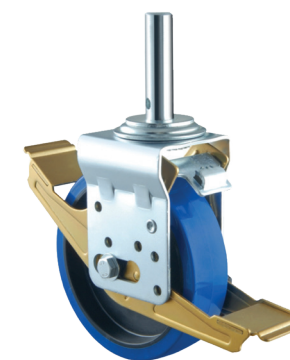
Pneumatic Wheel

125kg - 135kg Capacity

- Double Ball Race Head Set.
- Pressed Steel.
- Double Ball Bearing.



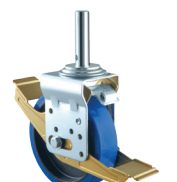
125kg - 135kg CAPACITY		MOUNTING PLATE	
Wheel Diameter	Overall Height	Model	Model
200mm (125kg)	250mm	TE43PRB200S	TE43PRB200R
250mm (135kg)	303mm	TE43PRB250S	TE43PRB250R



Scaffold Urethane 800kg Capacity

800kg Capacity

- Double Ball Race Head Set.
- Pressed Steel.
- Double Ball Bearing.



800kg CAPACITY			
Wheel Diameter	Overall Height	Pintle Size	Model
200mm (800kg)	243mm	37.5 x 60mm	TE33UNB200PB

CASTORS & WHEELS

CASTORS & WHEELS

CASTOR ACCESSORIES



**PFS2.5
Pallet Feet**

Prod Size	Top Section
135 x 135 x 2.5mm	60 x 60mm



TSWHEELPLATE

Wheel Plate

Mild Steel Raw 5mm Thick.
Pre-drilled & threaded holes for easy castor mounting.

Prod Size	UNC Holes Centres
130 x 100 x 5mm	80mm x 60mm x 5/16" 80mm x 105mm x 3/8"



EXPANDING SCREW

Model	Dimensions
TER21.5	Ø 19 - 21.5 Round Screw
TER24	Ø 21.5 - 24 Round Screw
TER27	Ø 24 - 27 Round Screw
TER30	Ø 27 - 30 Round Screw
TES21.5	Ø 19 - 21.5 Square Screw
TES24	Ø 21.5 - 24 Square Screw
TES27	Ø 24 - 27 Square Screw
TES30	Ø 27 - 30 Square Screw

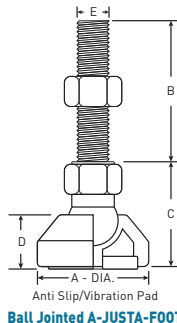


TUBES

Butyl Rubber Seamless (Butt-Joined)

Model	Dimensions
SPTUBE250X4	Tube Pneumatic 250X4
SPTUBE300-350X4	Tube Pneumatic 300X4 or 350X4
SPTUBE250X6	Tube Pneumatic 250X6
SPTUBE350X6	Tube Pneumatic 350X6
SPTUBE500X6	Tube Pneumatic 500X6
SPTUBE400X8	Tube Pneumatic 400X8
SPTUBE650X8	Tube Pneumatic 650X8

CASTORS & WHEELS



INSERT SIZES

Model	Specifications
S3816	M16 (Square Tube)
S3820	M20 (Square Tube)
S5016	M16 (Square Tube)
S5020	M20 (Square Tube)
S5016	M16 (Round Tube)
S5020	M20 (Round Tube)

ADJUSTABLE FEET

A multi-adjustable pedestal foot - ideal for ideal for industrial, commercial, workshop or food industry applications.

The special insert in the base helps to absorb vibration and means your machinery will stay exactly where you put it.

Model	Spindle Size	Overall Length
AF801650	M16	50mm
AF8016100	M16	100mm
AF8016150	M16	150mm
AF8020100	M20	100mm
AF8020150	M20	150mm
AF8024150	M24	150mm
AF10016100	M16	100mm
AF10016150	M16	150mm
AF10020100	M20	100mm
AF10020150	M20	150mm
AF12520150	M20	150mm
AF12524150	M24	150mm
AFS601250	M12	50mm
AFS6012100	M12	100mm
AFS6012150	M12	150mm